



SCICOM Electronics Co.LTD

Part Number: GX120068S

Description: MDL,SIN,100D,1:1,SMT,TU, NPB

APPLICATION- ETHERNET TRANSFORMER/CHOKE



Features and Benefits:

- RoHS peak reflow temperature rating 245°C
- Low profile packages from .094" (2,39mm) to .078" (1,98mm) for PC card and cardbus applications

Electrical Specifications @ 25°C - Operating Temperature 0°C to 70°C													
Part Number	Turns Ratio (+/-5%)		Insertion Loss(dB MAX) (dB or better)	Return Loss (dB or better)			Differential to Common Mode Rejection (dB Min)			Cross Talk (dB MIN)			Hipot (VRMS MIN)
	TX	wRX		100 KHz-100 MHz	30 MHz	60 MHz	80 MHz	30 MHz	50 MHz	100 MHz	30 MHz	62 MHz	
GX120068S	1:1	1:1	-1.0	-16	-14	-12	-40	-35	-30	-45	-40	-37	1500

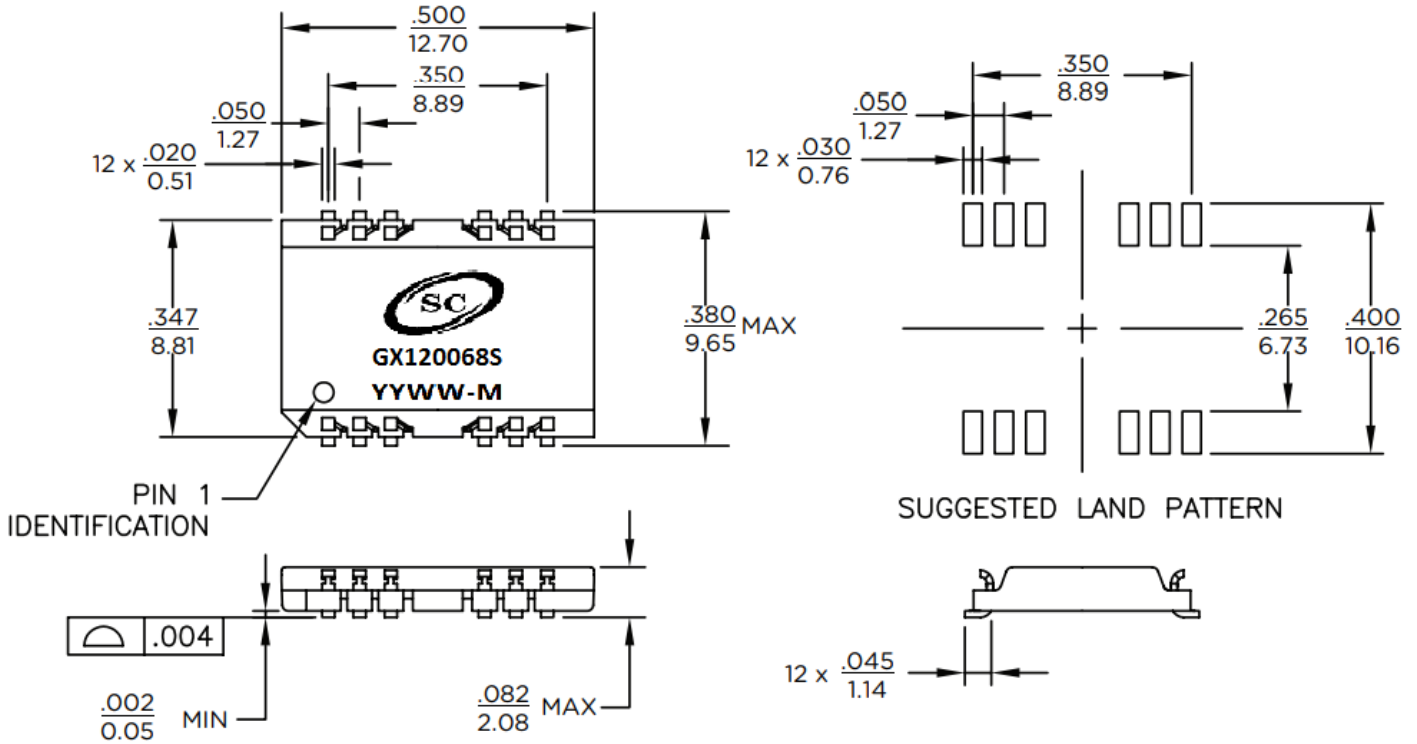
1. Extended operating temperature (-40°C to +85°C)
2. MSL (Moisture Sensitivity Level): a = 1, b = 2, c = 3, d = 4, e = 5

Notes: When ordering Tape & Reel packaging, add the suffix "T" to the end of the part number.



SCICOM Electronics Co.LTD

Mechanicals



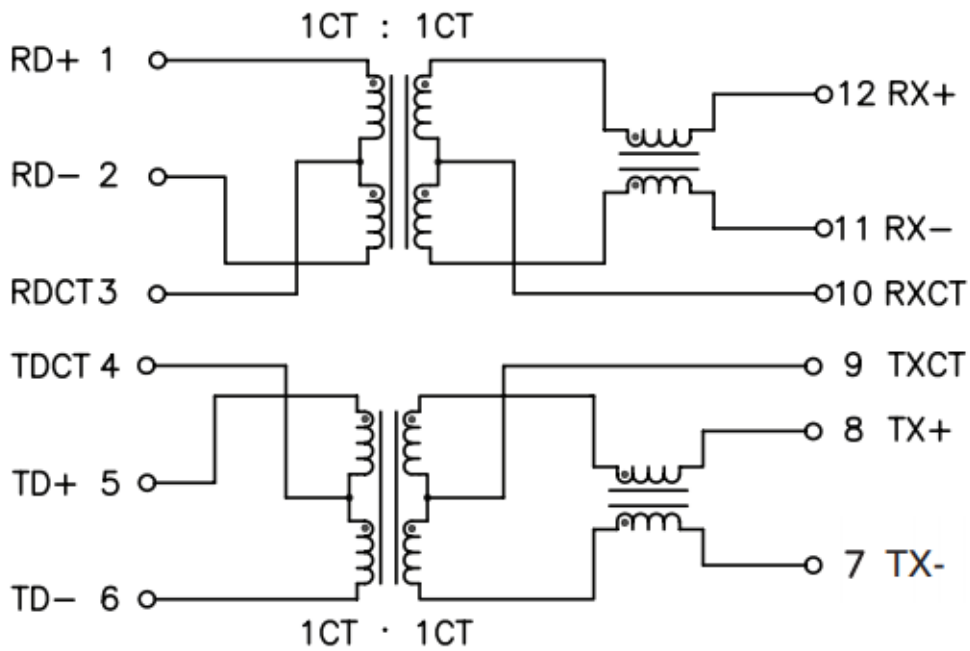
Dimensions: $\frac{\text{Inches}}{\text{mm}}$ Unless otherwise specified, all tolerances are $\pm \frac{.010}{0,25}$

Weight0.4 grams
Tape & Reel2000/Reel
Tube40/Tube



SCICOM Electronics Co.LTD

Schematics



Note : This part supports AutoMDIX function , whereby TX and RX channels can be swapped to ease PCB layout

Package

